

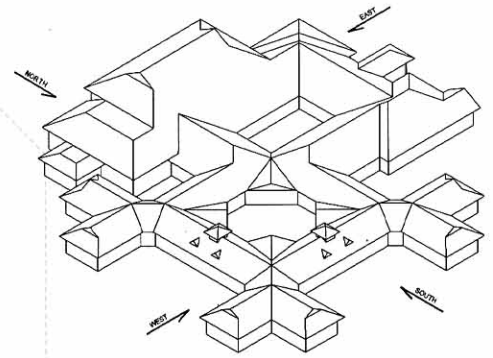
The Ramsdale Park development proposals were the result of a five year collaborative research project between architect, design team and service provider, collectively called Wellspring Consortium.

Initially the service provider, a moderately well known healthcare provider, assembled an operational brief based on the principles of running a typical local authority secure unit (LASU). Extensive research and visits to centres across the United Kingdom convinced the team that secure care for minors could be delivered in a more commercially viable manner than the traditional 8 or 16 LASU unit.

Whilst by this stage privatised prison operations were now an accepted entity, secure care of minors was the responsibility of the Department of Health. Thus generic designs were worked up with draft operational specifications which in turn were tested with the Department of Health.

Following acceptance in principle to the proposals a site was sought in the geographic middle of the country with good road links to metropolitan centres. Ramsdale Park, a country house, converted into an elderly care facility was eventually selected over a number of other properties.

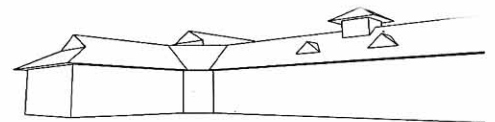
Designs for a secure educational care facility were then prepared for a centre that could accommodate 48 minors with all the necessary ancillary accommodation. An outline planning application was lodged early in 2000 which in due course was approved. However by this stage the responsibility for care of juveniles had passed to the Youth Justice Board.



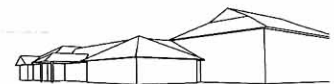
ISOMETRIC VIEW



NORTH VIEW



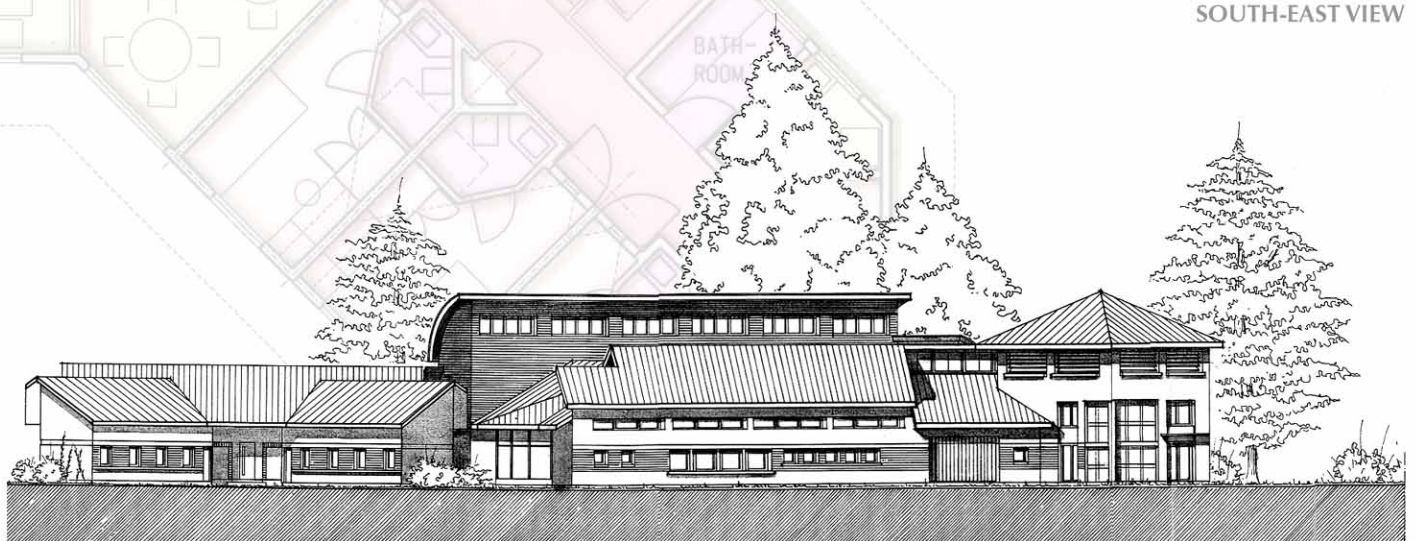
SOUTH-WEST VIEW



NORTH-EAST VIEW



SOUTH-EAST VIEW



HOUSE UNIT